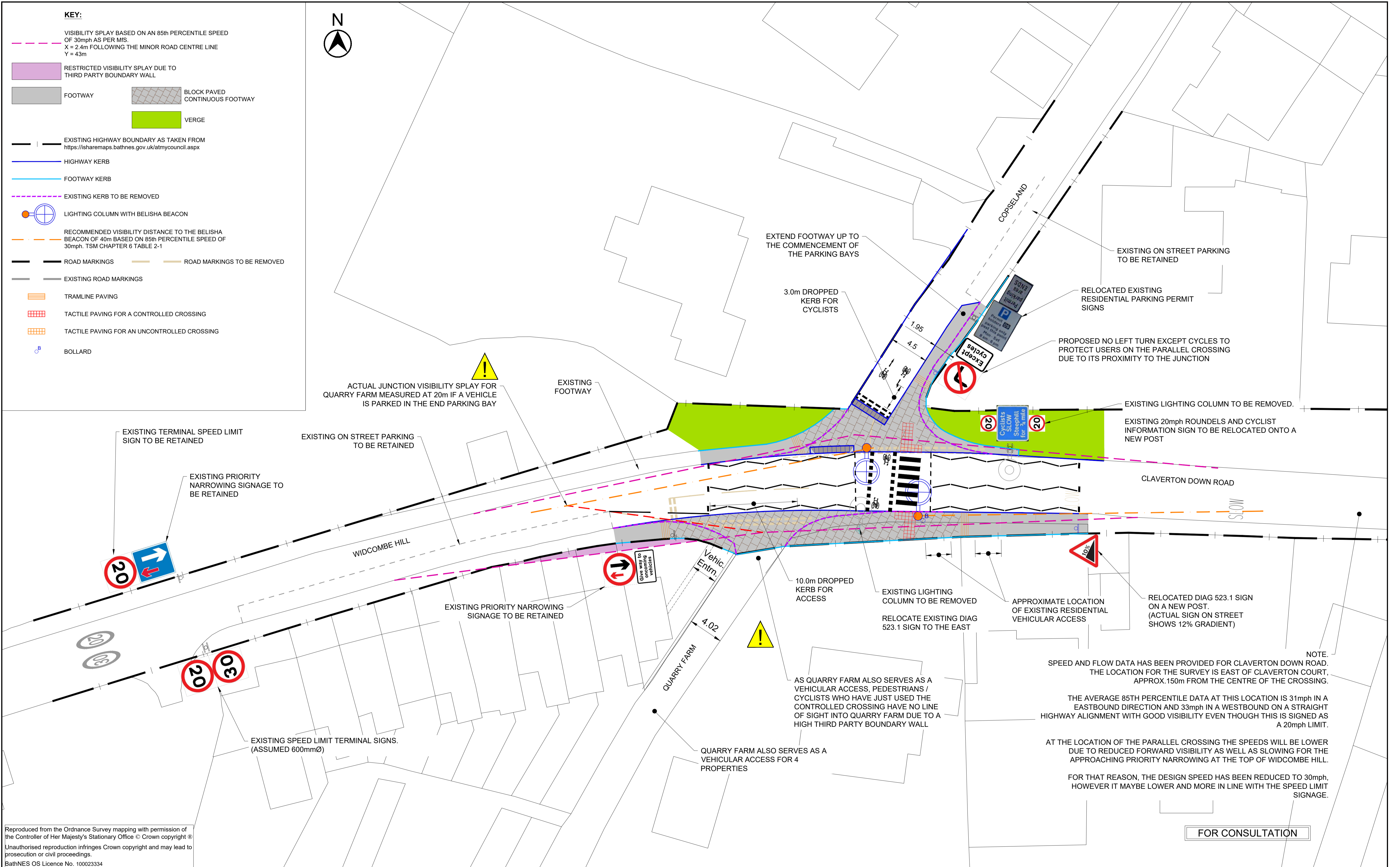
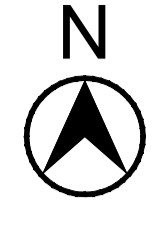


KEY:

- VISIBILITY SPLAY BASED ON AN 85th PERCENTILE SPEED OF 30mph AS PER MIS.
X = 2.4m FOLLOWING THE MINOR ROAD CENTRE LINE
Y = 43m
- RESTRICTED VISIBILITY SPLAY DUE TO THIRD PARTY BOUNDARY WALL
- FOOTWAY
- BLOCK PAVED CONTINUOUS FOOTWAY
- VERGE
- EXISTING HIGHWAY BOUNDARY AS TAKEN FROM <https://sharemaps.bathnes.gov.uk/atmycouncil.aspx>
- HIGHWAY KERB
- FOOTWAY KERB
- EXISTING KERB TO BE REMOVED
- LIGHTING COLUMN WITH BELISHA BEACON
- RECOMMENDED VISIBILITY DISTANCE TO THE BELISHA BEACON OF 40m BASED ON 85th PERCENTILE SPEED OF 30mph. TSM CHAPTER 6 TABLE 2-1
- ROAD MARKINGS
- ROAD MARKINGS TO BE REMOVED
- EXISTING ROAD MARKINGS
- TRAMLIN PAVING
- TACTILE PAVING FOR A CONTROLLED CROSSING
- TACTILE PAVING FOR AN UNCONTROLLED CROSSING
- BOLLARD



NOTE:
SPEED AND FLOW DATA HAS BEEN PROVIDED FOR CLAVERTON DOWN ROAD. THE LOCATION FOR THE SURVEY IS EAST OF CLAVERTON COURT, APPROX. 150m FROM THE CENTRE OF THE CROSSING.

THE AVERAGE 85th PERCENTILE DATA AT THIS LOCATION IS 31mph IN A EASTBOUND DIRECTION AND 33mph IN A WESTBOUND ON A STRAIGHT HIGHWAY ALIGNMENT WITH GOOD VISIBILITY EVEN THOUGH THIS IS SIGNED AS A 20mph LIMIT.

AT THE LOCATION OF THE PARALLEL CROSSING THE SPEEDS WILL BE LOWER DUE TO REDUCED FORWARD VISIBILITY AS WELL AS SLOWING FOR THE APPROACHING PRIORITY NARROWING AT THE TOP OF WIDCOMBE HILL.

FOR THAT REASON, THE DESIGN SPEED HAS BEEN REDUCED TO 30mph, HOWEVER IT MAYBE LOWER AND MORE IN LINE WITH THE SPEED LIMIT SIGNAGE.

Reproduced from the Ordnance Survey mapping with permission of the Controller of Her Majesty's Stationary Office © Crown copyright
Unauthorised reproduction infringes Crown copyright and may lead to prosecution or civil proceedings.
BathNES OS Licence No. 100023334

FOR CONSULTATION

 CHRIS MAJOR ASSISTANT DIRECTOR HIGHWAYS & TRANSPORT	PRODUCED BY	SCHEME TITLE	DRAWING TITLE				DATE	DRAWN BY	APPROVED BY				
	TRAFFIC MANAGEMENT	WIDCOMBE HILL / CLAVERTON DOWN ROAD PARALLEL CROSSING	WIDCOMBE HILL / CLAVERTON DOWN ROAD PARALLEL CROSSING				NOV 20	ADS	PG				
							SCALE	CHECKED					
							TITLE WIDCOMBE HILL / CLAVERTON DOWN ROAD PARALLEL CROSSING						
							DRAWING No.	T1.4_01-C-05					
							REV.	DATE	REVISIONS	DRWN.	CHKD.	APPROV.	REV.
							B	11.02.21	CONSULTATION ISSUE	ADS	AS	PG	B
							A	07.01.21	BOLLARD ADDED AS PROTECTION TO BELISHA BEACON	ADS	AS	PG	B