





Welcome to Haycombe

Organising a funeral can be a challenge. There is so much to consider when arranging a suitable send-off for a loved one. Here at Haycombe we aim to support you to make these arrangements. Whether you are considering burial or cremation, our staff can explain and guide you through the services we offer. On the southern edge of Bath, Haycombe offers unrivalled views of the rolling landscape of the beautiful Englishcombe Valley, Newton St Loe Valley and the Welsh Hills. Straight away our visitors feel connected with Bath and its natural surroundings. Haycombe first opened in 1937, purely as a cemetery with a chapel.

The Crematorium was added later, in 1961. We offer a variety of services including; burials, cremations and memorials to people of all faiths and beliefs. You are welcome to pop in to speak to one of our friendly and experienced team. They can talk to you about the services we offer and discuss your needs for a fitting memorial.

Contents

Welcome to Haycombe	3
Opening Times	5
Our service	6
Granite benches	8
Interment of cremated remains	9
Shrubberies	14
Natural areas for the scattering of cremated remains	15
Haycombe Cemetery and Crematorium	19
Other memorials at Haycombe	20
Baby Memorials	24
A range of beautiful urns and keepsakes	25
Ashes into Glass	26
Wildlife at Haycombe	27
Annual events	28
Presenting the memories of loved ones forever	31

Opening Times

Office Hours - the office is situated just inside the main gates to the right.

Monday and Tuesday 9am to 4pm

Wednesday 9am to 12pm and 1.30pm to 4pm

Thursday and Friday 9am to 4pm

Closed at weekends and bank holidays.

Cemetery gates and books of remembrance

Open daily including bank holidays and weekends.

1st October to 31st March 8am to 4.30pm

1st April to 30th September 8am to 8pm

Public toilets are available during office opening hours and when funeral services are taking place. They are closed weekends and bank holidays.

We would like to keep Haycombe Cemetery and Crematorium a safe place to visit. Please bear this in mind when bringing items into the cemetery. Glass is not permitted. Please no dogs, except assistance dogs and any dogs visiting the pet section with their owners.



Our service

We understand that a funeral service and the way in which it is to be conducted is a very personal choice. This brochure aims to explain the various options available to you.

However please feel free to pick up the telephone and speak to a member of our friendly team.

At Haycombe we offer the following services;

- A funeral service in one of our two chapels. A cremation service can be held in either the Hilltop Chapel or Valley Chapel.
- Memorial services, or funerals linked to burial in the Hilltop Chapel.
- A full body burial. This can be with or without a graveside service, or with use of our Hilltop Chapel.
- A direct cremation (without service) using our dedicated Orchard Entrance.
- Private plots for ashes.
- Scattering areas and communal shrubbery beds for the interment of ashes.
- Memorials of various types.
- Green burials.
- Pet burial or interment of pet ashes.
- Celebrancy service (for funerals, ashes interments or scatterings).
- Obitus, audio visual and web casting system.

In the case of cremation, the cremated remains of your loved one can be laid to rest in a variety of ways, at Haycombe we offer the following options.

- A burial of cremated remains, known as an interment.
- Scattering of remains in designated areas in the cemetery grounds.
- Taking away for private disposal.
- A placement of cremated remains in an above ground vault.

Whether you would like to inter cremated remains in an urn, a casket, loose in the ground, or scatter them above ground, there are various options available at Haycombe.

We also accept cremated remains if the cremation has taken place elsewhere.



Granite benches

These elegant benches are manufactured in polished granite making them strong, durable and beautiful.

They are available to sponsor on a 25 year lease, and are available only in the new part of Haycombe Cemetery, overlooking Newton St Loe.

There are two designs of bench. They both come in the honeycomb shade of granite, and can each accommodate two memorial plaques. Benches are installed on a concrete plinth for stability, and will receive a yearly clean under our sponsorship scheme. The lease can be renewed after 25 years at a reduced price, or plaques can be removed and taken home after the lease has elapsed.

You can choose from a backed model, or the oval curved bench. The backless design allows the user to face either direction, ensuring that the spectacular view is not missed.

Application forms are available from the Main Office.



Interment of cremated remains

Interment of cremated remains is where the cremated remains are buried. We currently offer the following interment options.

Englishcombe Garden

The sloping bank has spectacular views over the Englishcombe Valley. Each plot can hold up to two caskets, urns or loose cremated remains beneath a polished granite tablet. These are available in a choice of four colours and you can also choose to have one or two flower containers within the tablet.

Valley View Garden

The sloping bank of this garden has a panoramic view of the Newton St Loe Valley and the Welsh Hills. Each plot can hold up to two caskets, urns or loose cremated remains beneath a polished granite tablet. These are available in a choice of four colours. You can also choose to have one or two flower containers within the tablet.



Englishcombe Garden



Valley View Garden

Pergola Garden

The beautiful and tranquil Pergola Garden is a popular place to sit, listen and watch wildlife and birds whilst remembering the loved ones interred within this garden. The garden contains a small ornamental pond which is a habitat for damsel and dragonflies, frogs and newts, as well as a feeding ground for birds, hedgehogs and bats. After being closed for many years, this mature garden has recently had clearance work done to allow us to add some additional plots. Availability is limited.

The plots can contain up to two lots of cremated remains and are topped with a polished granite tablet in a choice of four colours. An inscription of up to 60 characters is included.



Pergola Garden



Cremation Plots

Cremation plots are half grave spaces with views around the cemetery. Each plot can hold up to four caskets, urns or loose cremated remains and make a perfect choice for a family grave. For cremation plots you purchase the right of interment only and you will need to make your own arrangements with a stonemason to purchase a suitable memorial. The Main Office can supply you with a list of authorised stonemasons.



Cremation Plots

The Coppice and Queen Elizabeth II Memorial Woodland

In this green burial area, loose cremated remains can be interred by an existing young tree. Each tree can accommodate up to two loose cremated remains interments. A cast aluminium plaque with your choice of inscription is placed on a stake next to the tree.



Sanctum

Unlike traditional memorials the Sanctum is a secure above ground vault. These vaults are situated along the pathways overlooking the beautiful landscape of Newton St Loe and the Welsh Hills.

These polished granite vaults are available in two sizes. We offer a vault to accommodate two urns or a family vault for four urns. Both options are on a lease of 50 years which is renewable thereafter.

Each Sanctum vault includes a large granite plaque on which you can add your own inscription in a choice of two colours. If you wish, you can also add an image of your choice to the plaque, creating a very personal memorial.

The price of the sanctum includes a specially selected brass urn for the first placement.



Circle Gardens

These round beds have been created to provide a private space where cremated remains can be interred and a stunning granite memorial takes pride of place.

Two sets of cremated remains can be accommodated, and a memorial to suit your needs can be selected from our range. The beautifully inscribed memorial sits on a bed of decorative stone and features a flower container.

The Circle Garden is a space purely dedicated to your loved one, making it a truly special place to visit.



Shrubberies

There are a number of shrubbery areas that can be used for the interment of loose cremated remains. These are communal areas and are not private plots.

It is important to know that these areas are designed to be natural open areas and as such only unwrapped flowers can be placed there.

Kerb blocks

Each high quality plaque is made of black granite with gilded lettering and will be set on our honeycomb colour Kerb Blocks, which also boast an individual flower vase for each plaque. There is an option to add a unique motif of your choice or a photo plaque of your loved one. The Kerb Blocks are installed together in rows surrounding the perimeter of Shrubbery 31 and Shrubbery 32.



Natural areas for the scattering of cremated remains

The Glade, The Grassland and The Meadow are all natural areas featuring wild and natural flora.

The Glade

This is a natural, wooded area where cremated remains can be scattered loosely among the trees. It is abundant with wildlife and there are natural habitats for hedgehogs and other creatures situated here.

You have the choice of a Welsh slate memorial plaque on the barbican tower or a granite plaque on a mushroom.

Both plaque options are available to purchase on a lease period of 10 years, renewable thereafter.

Woodland Mushrooms

There are a number of Woodland Mushroom memorials located in The Glade. A circular granite disc inscribed in memory of a loved one can be added to this charming addition to our memorial range.

The black granite plaque is inscribed in gold leaf with wording of your choice.



The Grassland

This open area is designated for the scattering of cremated remains and the grass is routinely cut short. There is a beautiful view looking out to the surrounding countryside and you have the option of a memorial leaf on the Willow Memory Tree which overlooks the Grassland.

The Willow Tree

A simple granite leaf bearing the name and dates of a loved one can be placed on this unique sculpture. This tree is perfectly placed for memorializing your loved ones for any of our scattering areas. Crafted for us from stone and steel, the Willow is designed to weather to deeper natural tones and colours.

Situated in the North-West of the cemetery, it is ideally positioned for the beautiful views of Newton St Loe and the surrounding countryside. The memorial leaves are available to purchase on a 10 year lease, with the option to renew thereafter.



The Meadow

This area of meadowland next to The Glade has a fantastic view of the adjacent countryside, and is available for scattering cremated remains. The grassed area is sown with summer flowering wild flowers, creating a tranquil ambiance.

A Welsh slate memorial plaque can be included on a memorial tower with your choice of inscription. The plaque lease period is 10 years, and renewable thereafter.



Haycombe Cemetery and Crematorium

This map guides you into the cemetery and around the Hilltop chapel which is situated near the entrance. Beyond the Hilltop chapel are two identical avenues. The avenues guide you to either the left or the right side of the cemetery.

The avenue on the right leads you through the cemetery to the crematorium, which is situated along the bottom boundary. If you continue to follow the road to the right this will lead you to the graves and memorial gardens with a panoramic view of the Newton St. Loe Valley.

The avenue on the left leads you to the left side of the cemetery where you will find shrubberies, memorial gardens, and graves with a view of Englishcombe village and the surrounding countryside. The map also includes a key which identifies the different sections of the cemetery.



- Unconsecrated Ground
- Consecrated Ground
- Gardens
- Shrubberies
- Taps
- Rubbish & Garden Waste Bins

Other memorials at Haycombe

We understand that some families are looking for a memorial for a loved one without the interment of their cremated remains. We can offer several memorial options.

Tree of Remembrance

A tree of remembrance offers a place to commemorate your loved one by leasing one of the trees at Haycombe, forming a living memorial. These trees have a cast aluminium plaque with your choice of inscription on a stake next to the tree. You can lease an existing tree for a period of 25 years.

When the initial period expires, you can renew thereafter.



The Remembrance Wall

An area of the wall surrounding the crematorium courtyard has been set aside for memorial plaques, available in a choice of three colours. Floral tributes can be placed in the vases beneath the memorials.



Bench of Remembrance

Benches around Haycombe provide places to rest and admire the views. Our new benches are made from recycled materials, offering an eco-friendly and durable alternative to wood. Benches are available on a 25 year lease. A plaque can be attached in memory of your loved one and additional plaques can be purchased for the bench and will stay in place for the lease period. Also available are granite benches in the extension to Haycombe.



Books of Remembrance

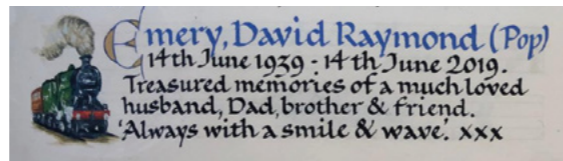
The Books of Remembrance provide a permanent record of a person's death. You can choose the size of entry and individual motifs are available with larger entries. Entries can be made at any time, even years after a person's death. The Books of Remembrance are updated periodically by an artist, please note that entries in the Book of Remembrance are not made automatically, it is on receipt of an application form and fee.

The Books of Remembrance can now be viewed online by using the web address

www.calligraphyuk.com/haycombe

Memorial cards

These are a copy of the entry from the Book of Remembrance, inscribed by the artist on a card about the size of a standard greetings card for you to keep.



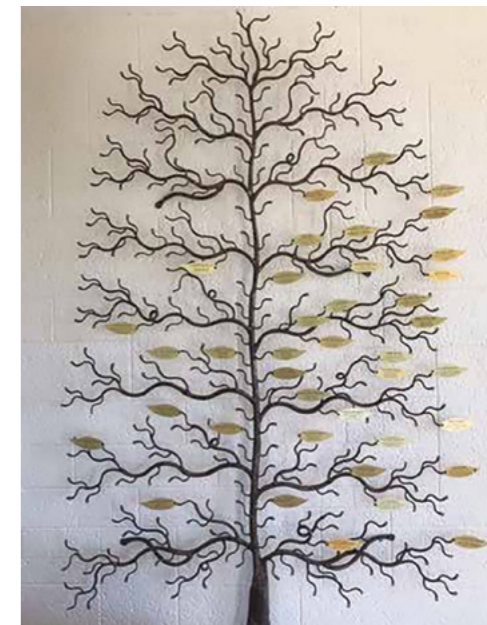
Memory Tree Leaves

This beautiful bespoke Memory Tree has been especially hand-crafted for Haycombe. The metal sculpture has a bronze finish, and makes a striking addition to our Book of Remembrance Room.

We are now able to offer gold-coloured leaves to adorn the branches, with an inscription of your choice.

An inscribed leaf in tribute to your loved one can be purchased by lease for a period of 10 years which is renewable thereafter.

Application forms are available from the Main Office.



Baby Memorials

The Forest Friends Frieze

Coloured Perspex butterflies in pink, blue or yellow, featuring your child's name and a choice of wording can be placed on the frieze. The bright little butterflies dance in the meadow with the Forest Friends and greet those who pass by the Butterfly Section. The Butterflies are the property of the purchaser and can stay on the frieze for 10 years (renewable thereafter).



Butterfly Section Memorial Tower

This tower is situated in the centre of the Butterfly Section, an area created for the burial of babies. A granite plaque with enamelled cut lettering and a butterfly motif is supplied and cut flowers can be placed in the flower containers at the foot of the tower.



Babies' Shrubbery

There are white marble tablets available which are placed around the boundary of the shrubbery.

A range of beautiful urns and keepsakes

Visit the Main Office at Haycombe Cemetery to view the range or contact us on **01225 396020** for more information.

Hold them in the palm of your hand...

Heart shaped urns can contain a small amount of ashes, and are available in two sizes.



Very special urns for your treasured one...

Full-size brass urns, and mini-urns are available so that you can keep a small amount of the ashes if you so wish.

All supplied in velvet presentation boxes.



Scatter tubes

These are available in a beautiful range of designs and suitable for interment, ashes scattering or as keepsakes. The tiny keepsake size is perfect for families who wish to share ashes, divide ashes to scatter or keep for temporary storage.



Ashes into Glass

Jewellery for ladies and gentlemen, incorporating a tiny amount of your loved ones ashes. Paperweights and bead charms now also available.

Your Ashes into Glass jewellery will remind you that your loved one is with you.

By wearing it or just holding it in your hand, you will connect with your loved one and share these special moments together.

The stones are produced individually in workshops at Barleylands Craft Village, Billericay. The ashes are expertly layered together with coloured and crystal glass at a temperature of 1100C. Each stone is hand-crafted, unique and will possess its own special charm. Once cooled, the stones are set into their own hallmarked mount.

View the range at Haycombe Cemetery Main Office.



Wildlife at Haycombe

Haycombe is home to many animals including deer, squirrels, pheasants and other birds.

Unfortunately some of these wild visitors don't understand the cemetery etiquette. Deer, for example, are very partial to roses. They may take all the roses on one grave and leave those on the next, giving the impression that one grave has been specifically targeted.

Using animal deterrent sprays on roses can be effective, and curry powder mixed with washing-up liquid is another option. This may also deter squirrels who love crocuses, tulips and lilies and like to dig up small bulbs and corms.

Alternatively we suggest you choose plants less appealing to deer or squirrels such as daffodils, grape hyacinths and alliums.



Annual events

You are welcome to attend any of our regular events at Haycombe Cemetery and Crematorium.

Service to Remember Special Babies

This service is organised in partnership with the Royal United Hospital chaplaincy, the Stillbirth and Neonatal Death Charity (SANDS) and in conjunction with the Baby Loss Awareness Campaign. The service takes place in May.

Remembrance Day Service

This open-air service takes place near to the War Graves Memorial Cross on 11 November, starting at 10.45am. After the service, hot drinks are available in the Top Chapel.

Christmas Memorial Service

On the second Sunday of December, we hold a memorial service so you can remember your loved ones at this special time of year. The service starts in the Top Chapel at 3pm and is then followed by refreshments.

Please note these dates can change so it is recommended to contact the Main Office near the event date for confirmation.



Application for an entry in the Book of Remembrance. **Please complete in capitals**

Surname of deceased:	Forenames of deceased:
----------------------	------------------------

Please record the entry in the Book of Remembrance for the above-named person

Surname: (Mr/Mrs/Miss/Ms)	
First Name(s) in full:	
Address:	
	Postcode:
Contact number:	
Email Address:	
Signed:	Date:

Note: You will not be contacted when the entry has been placed as it is automatically entered when the artist is next on site. The artist visits approximately every 8 weeks

For Office Use Only

Mem Sales	Database record	Database remarks
Date Paid	Cremation Number	Cremation Date

Name only on line 1 and Maximum 32 characters per line on lines 2 to 8. **Please complete in capitals**

Date of entry:	
1. Surname:	Forenames:
2.	
3.	
4.	
5.	
6.	
7.	
8.	

Flower/Motif/Badge are available with 5 or 8 line entries only

Flower of choice & colour: (i.e. Red Rose)	
Or Motif/Badge Details: (please supply a sample)	
Memorial Cards: (number required)	

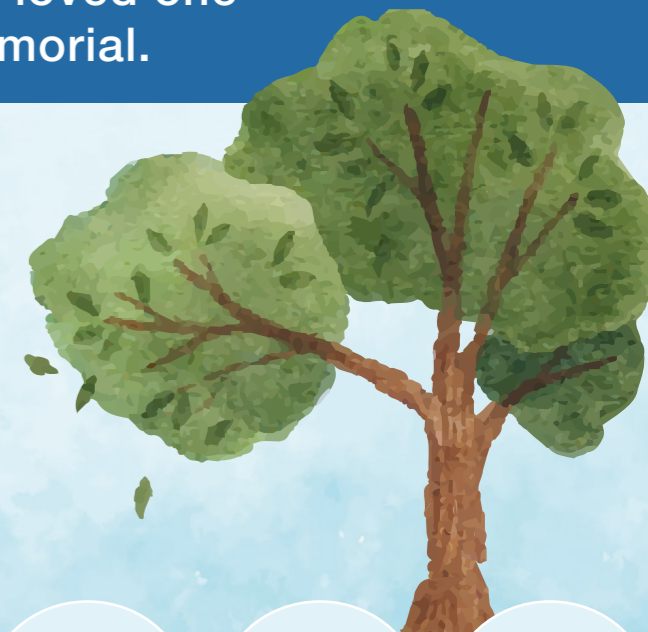
Presenting the memories of loved ones forever



Create a web page in memory of a loved one and enhance a new or existing memorial.

By simply scanning the QR code with the camera on your smartphone, you will be taken directly to the memorial page.

By placing a small unobtrusive plaque on the memorial, a whole life can be represented and shared including text, photographs, video, and music. And, most importantly, your memories of the person who has died will be available as an everlasting tribute.



<https://qr-memories.com/>





Bath & North East
Somerset Council

Haycombe Cemetery and Crematorium

Whiteway Road, Bath BA2 2RQ

Telephone: 01225 396020

Email: cemeteries_crematorium@bathnes.gov.uk

www.bathnes.gov.uk/bereavementservices